

Warm Up (9/10-9/11)

****Turn in your lab to the black tray****

1. Take out your Chapter 6 notes and your laptop
2. Log in to Google Classroom
3. Wait for me to post the quick quiz

Agenda

- Warm up: Ch 6 Quick Quiz
- 7.2 Notes: The Plasma Membrane
- Membrane coloring
- Lab: Observing Diffusion Across a Semipermeable Membrane

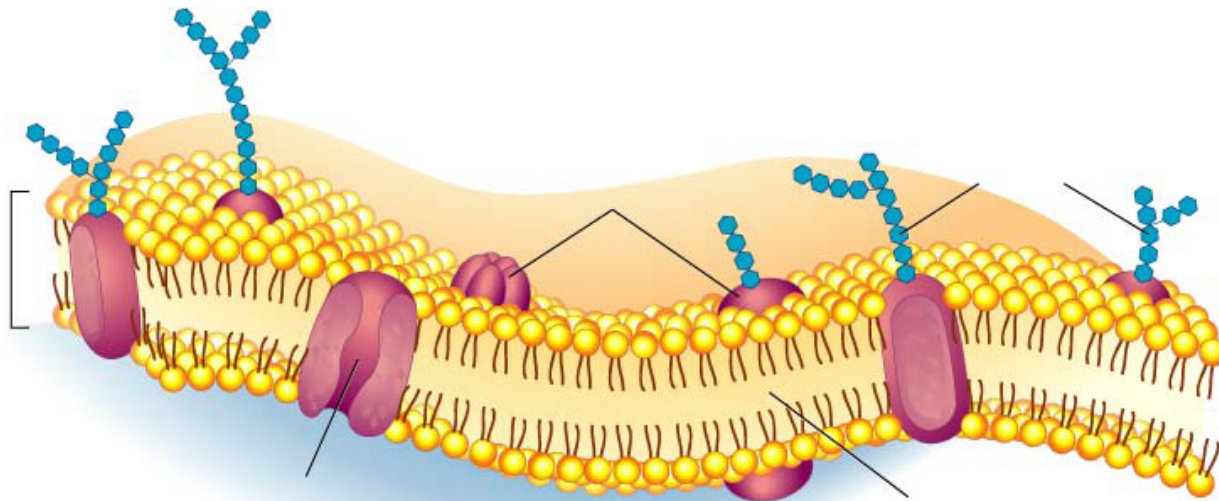
Homework: 7.2 Section Assessment

(pg. 178 #1-5)

DUE WED/THURS

7.2

Plasma Membrane



Think Back- Comprehension Check

- What is diffusion?
- What are the subunits for lipids?
- What is homeostasis?

The Cell Membrane

2 functions of the Cell Membrane

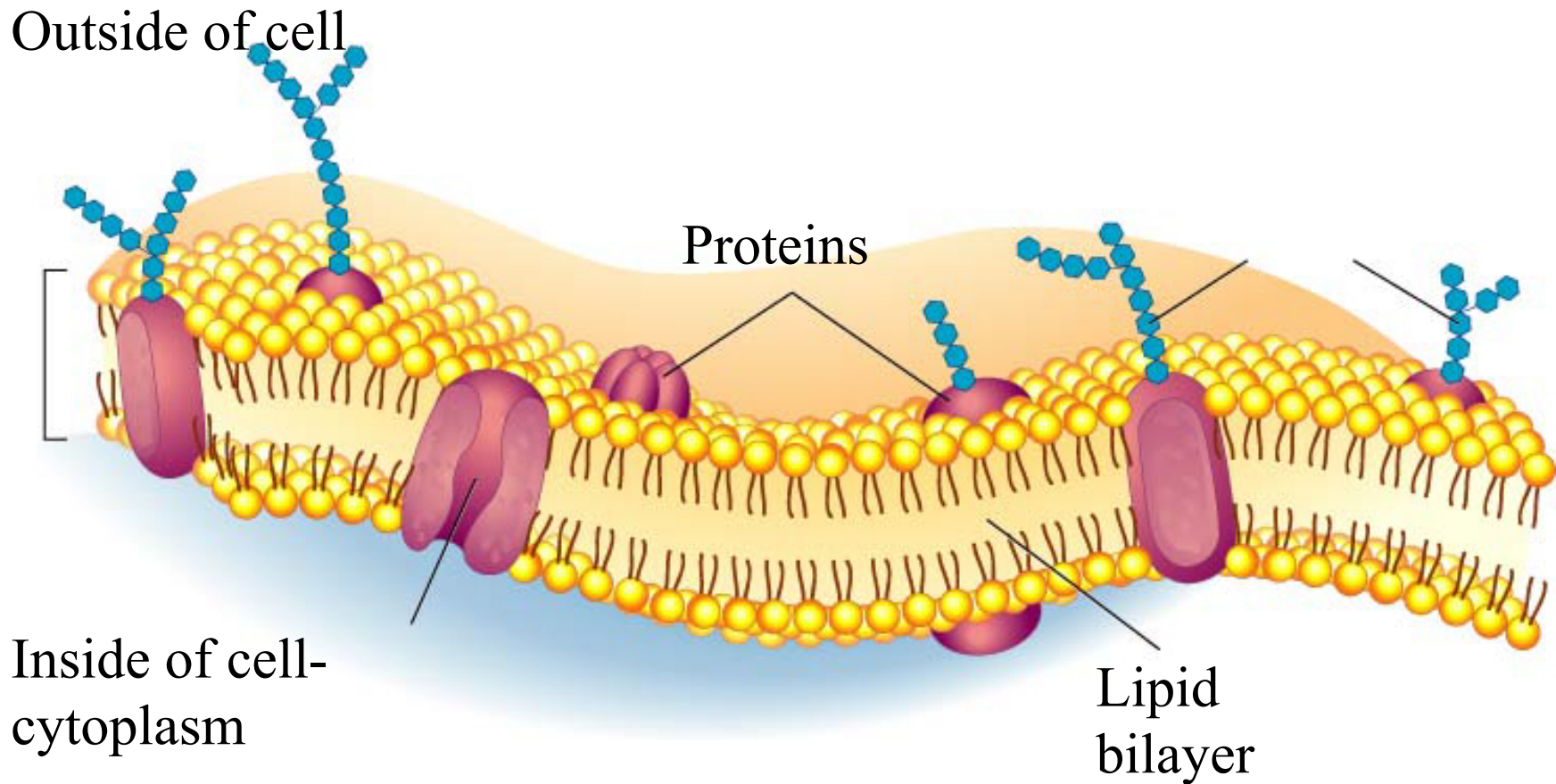
- Regulates what enters and leaves the cell
 - Selective permeability: allows some molecules in while keeping others out
 - Homeostasis: maintains balance in the cell's internal environment
- Provides protection and support for the cell

Structure of the Cell Membrane

- Composed of a double-layered sheet called the **phospholipid bilayer**.
- Most cell membranes contain molecules (like proteins) that run through the lipid bilayer.
 - Transport proteins: move needed substances or waste materials through the plasma membrane
- Lipid Bilayer is referred to as a “fluid mosaic model” of different molecules.
 - cholesterol, carbohydrate chains, etc

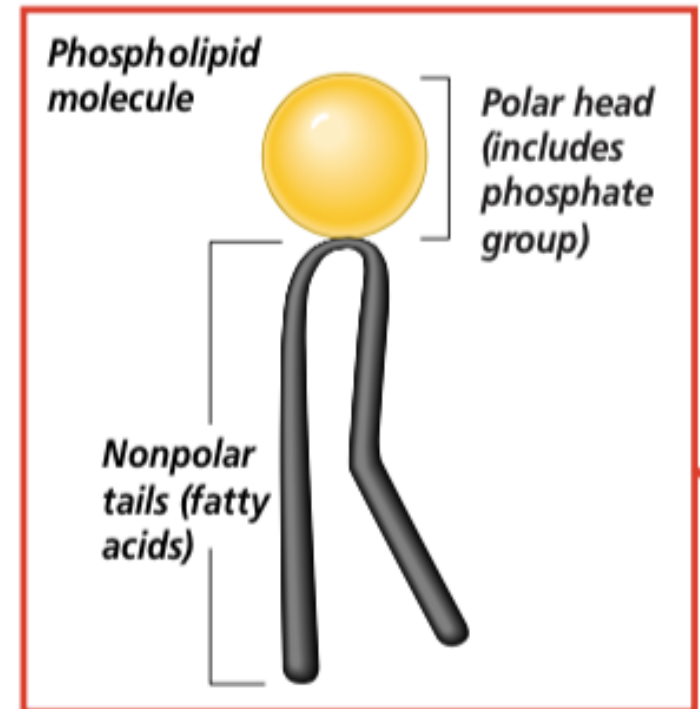
<https://youtu.be/nsklF1w4eok>

Cell Membrane



Phospholipid Bilayer

- Two fatty acid tails are nonpolar (hydrophobic) and head is polar (hydrophilic)
 - Water soluble at its surface and water-insoluble in the middle



Color

You have 5 minutes to...

- Color the **cell membrane** worksheet!
- You must use 3 different colors for these 3 labeled parts.
 - hydrophilic head (polar)
 - hydrophobic tail (nonpolar)
 - protein molecule

****Make sure to color ALL of them!****

