

Warm Up (2/4-2/5)

****Turn in your species to the black tray****

- Come get your scantron when you hear your name
- Look over the exam with your table mates and reflect on how you did!

Agenda

- Warm Up- Review Exam
- Chapter 16 Notes & videos: Primate Evolution
- Hominin Facebook Page
- Pass back final

Homework: Finish Facebook page
(Due Wed/Thurs)

****Ch 16/17 Quiz next Mon/Tues****

Chapter 16

Primate Evolution

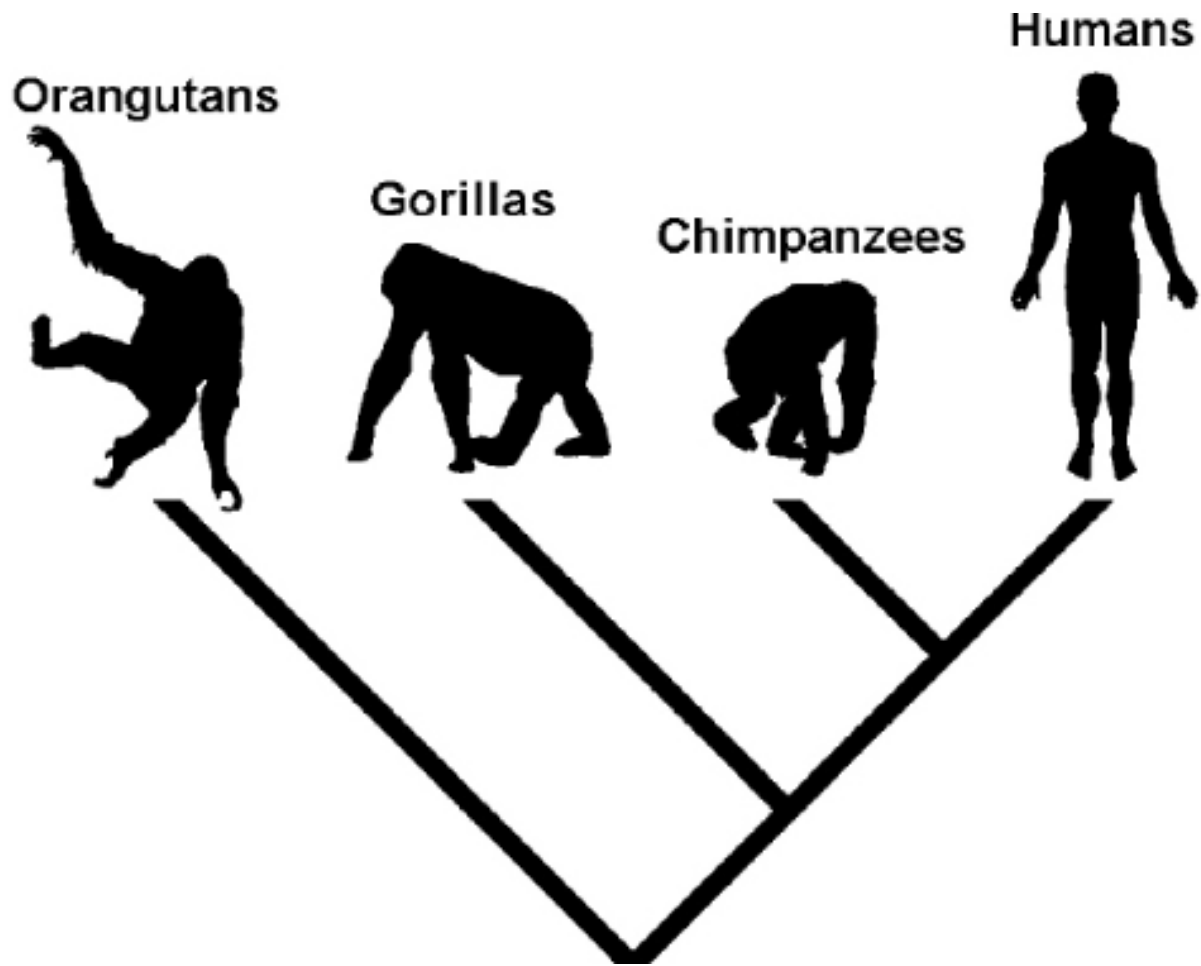
What is a primate?

- A group of mammals that include lemurs, monkeys, apes, and humans.
 - rounded head/ flattened face
 - highly developed vision: binocular, can see color, depth perception
 - opposable thumb
 - large brain relative to body size
 - probably lived in trees

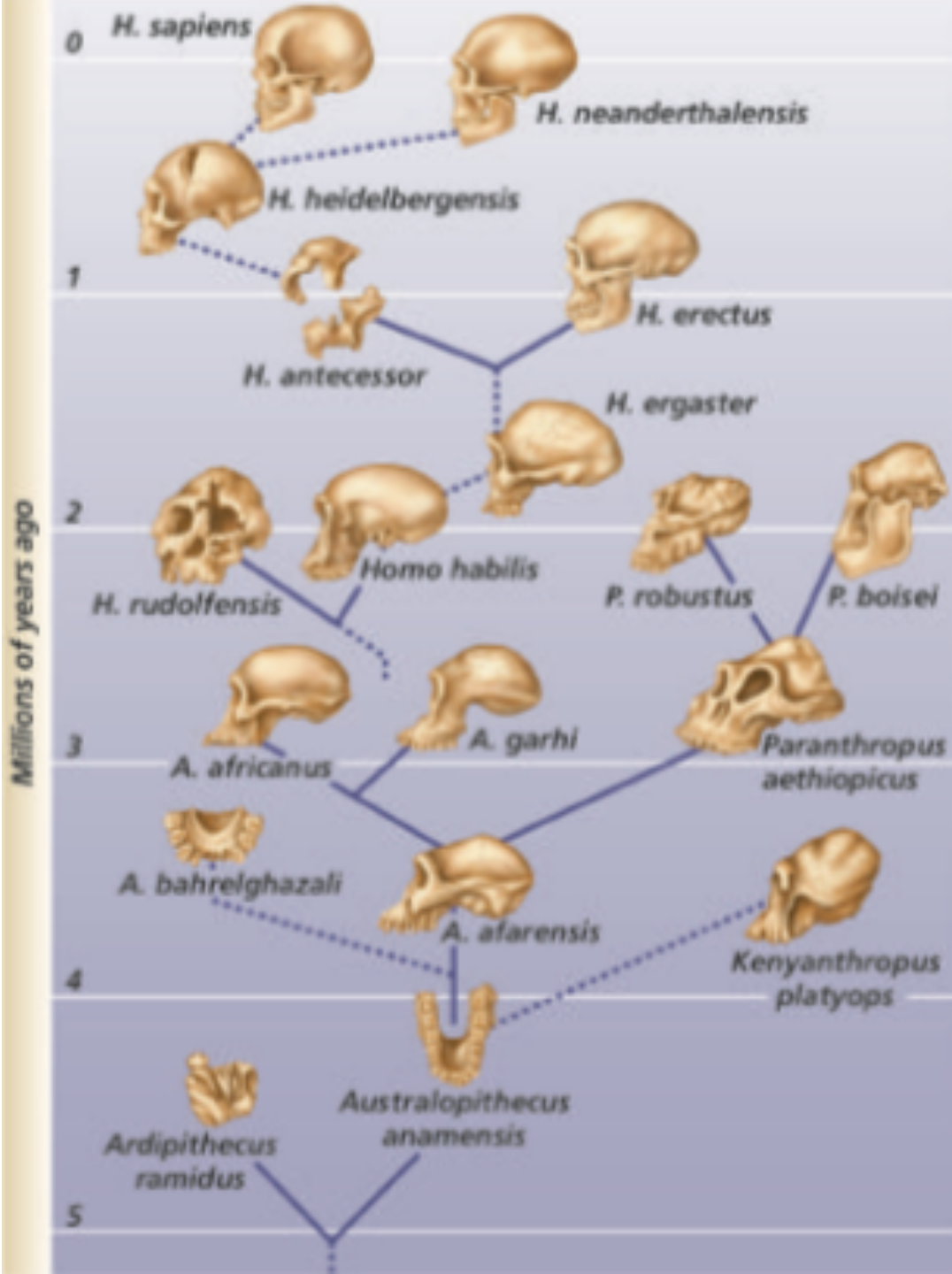
Primate Origin

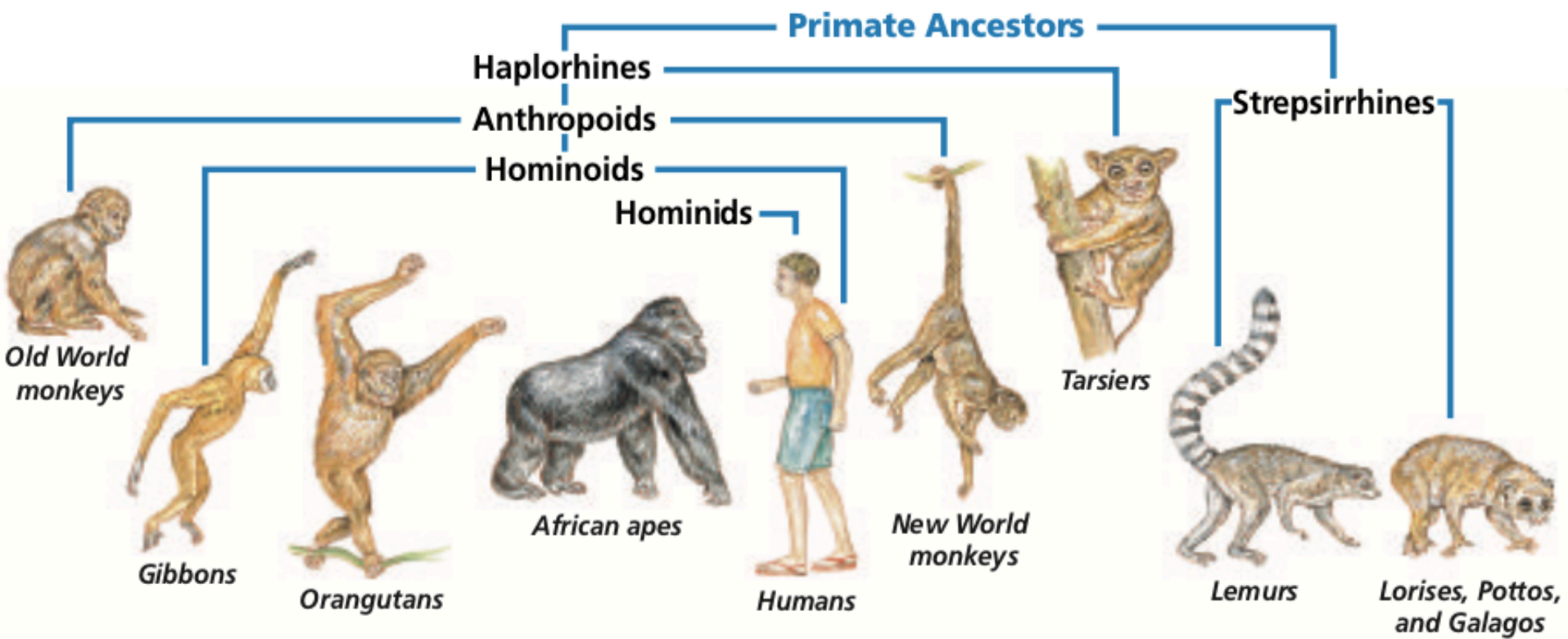


This is NOT what evolution looks like



****Simplified****





Anthropoids

- Human like primates
- Include hominoids, old world monkeys, and new world monkeys (see previous slide)
 - new world monkeys: prehensile tail for arboreal life
 - old world monkeys: generally larger, no prehensile tail <https://youtu.be/isorFmeW-f4>
 - hominoids: no tail, can walk upright on two legs, includes apes (orangutans, gibbons, chimps, bonobos, and gorillas) and humans

Human Ancestry

- Hominids: bipedal primates that include modern humans and their direct ancestors
 - australopithecine: early hominid that lived in Africa. Both apelike and humanlike characteristics.
 - “Lucy”- 3mya: Discovered in 1974 as most complete australopithecine.
 - *Australopithecus afarensis*- Oldest fossils of hominid species. Bipedal, but small brain



Chimpanzee

Pan Troglodytes

A



Ancient Hominid

Australopithecus afarensis

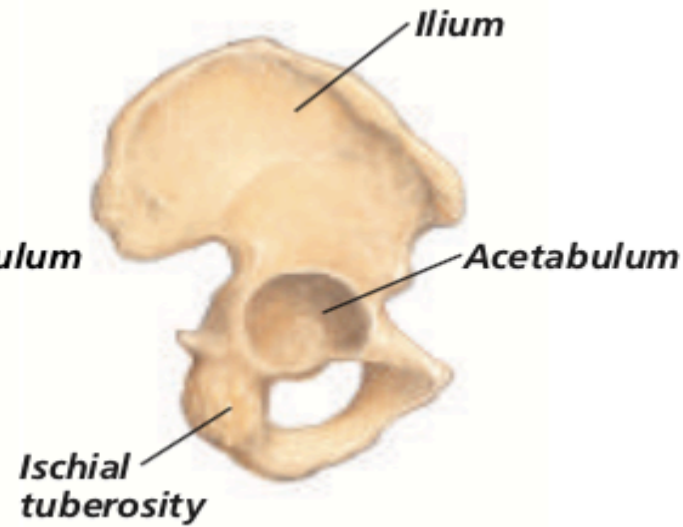
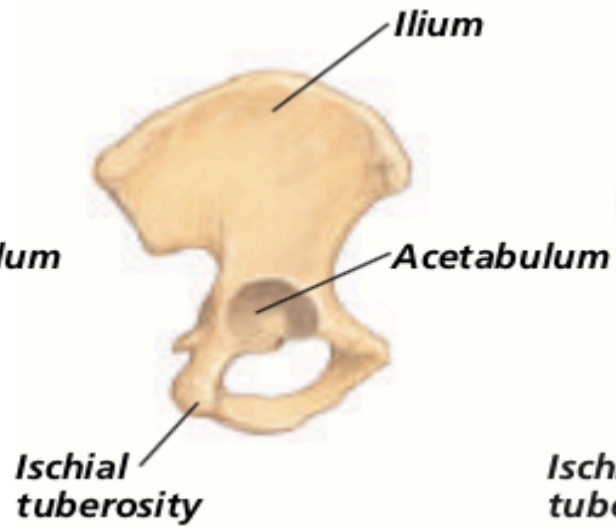
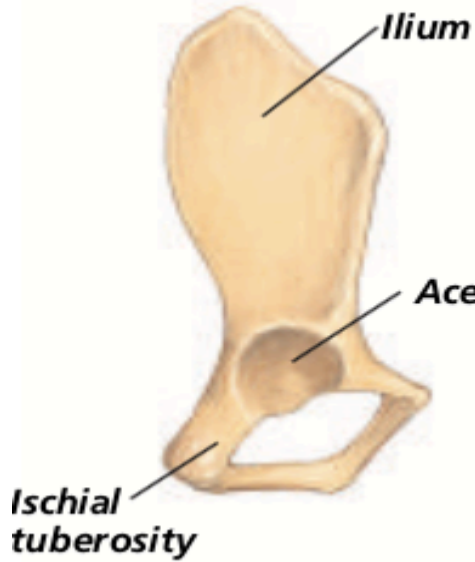
B



Human

Homo Sapiens

C



Emergence of Modern Human

- *Homo habilis*: 1.5-2.5 mya
 - skull more humanlike than australopithecines (bigger brain, smaller teeth)
 - Used tools “handy man”



- *Homo ergaster*: 1.4- 1.9 mya
- *Homo erectus*: 150,000 ya- 1.8 mya
 - larger brain, more humanlike face

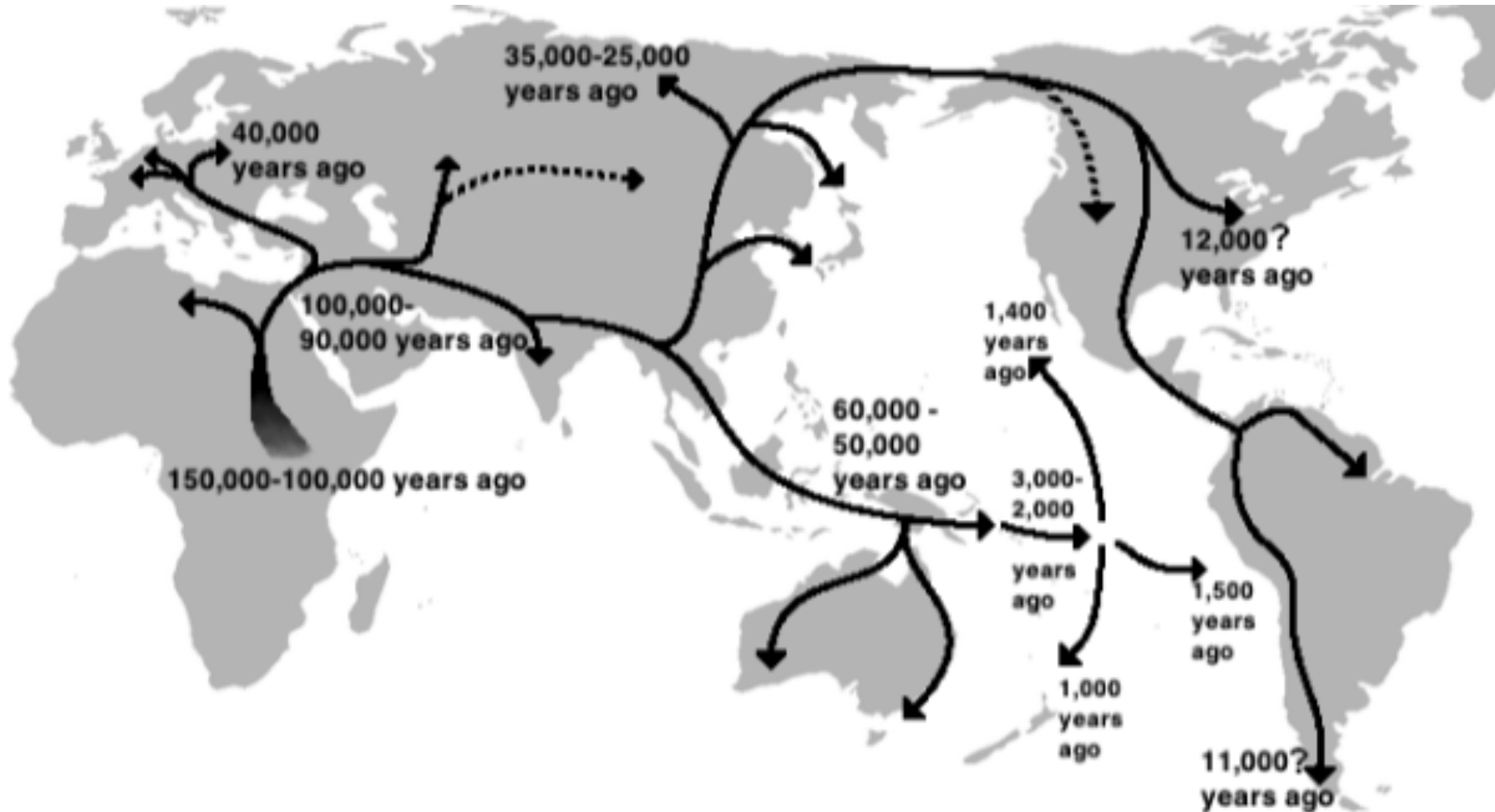


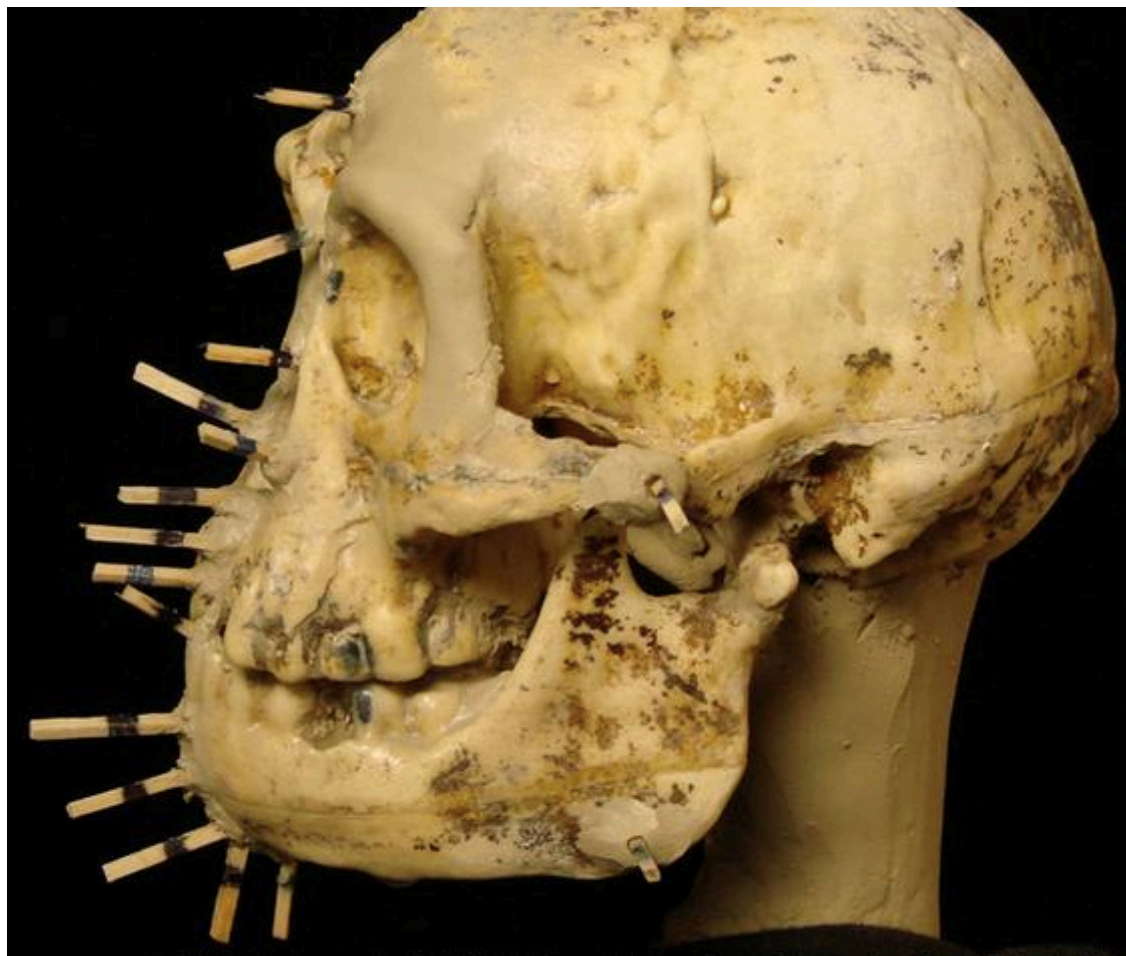
Homo erectus

- Neanderthal: 40,000- 200,000 ya
 - large brains, skilled hunters, probably used language
<https://ed.ted.com/featured/2Xj68jNv>
- Cro- Magnon: 35,000ya
 - Identical to modern humans in height, skull & tooth structure, and brain size. Most advanced abilities.



“Out of Africa” Theory





Evolution of Man (In under 30 seconds)

